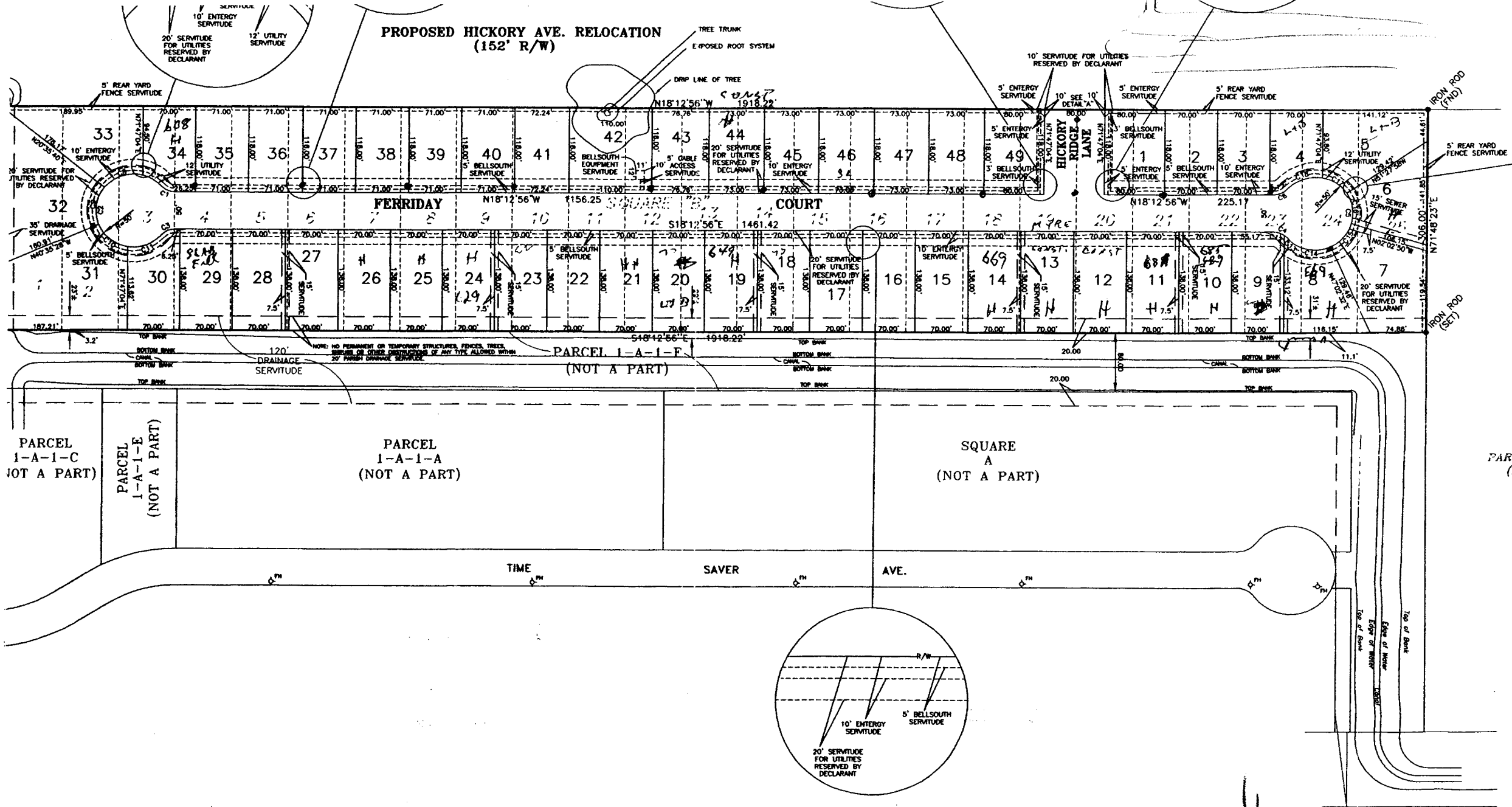


**PROPOSED HICKORY AVE. RELOCATION
(152' R/W)**



PARCEL 1-A-1-C (NOT A PART)

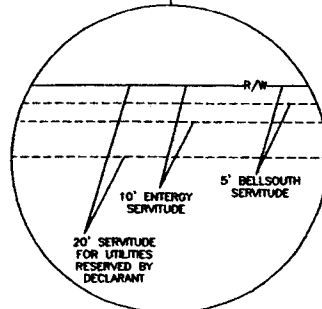
PARCEL 1-A-1-E (NOT A PART)

PARCEL 1-A-1-A (NOT A PART)

SQUARE A (NOT A PART)

PARCEL (N)

TIME SAVER AVE.



CERTIFICATE OF PLANNING DEPARTMENT REVIEW

Summary No. _____ Docket No. _____
has been reviewed by the planning department.

Planning Director _____ Date _____

CERTIFICATE OF COUNCIL APPROVAL

13.4751 ACRES
AREA

R-1B
ZONING

CONCRETE
ROAD SURFACING